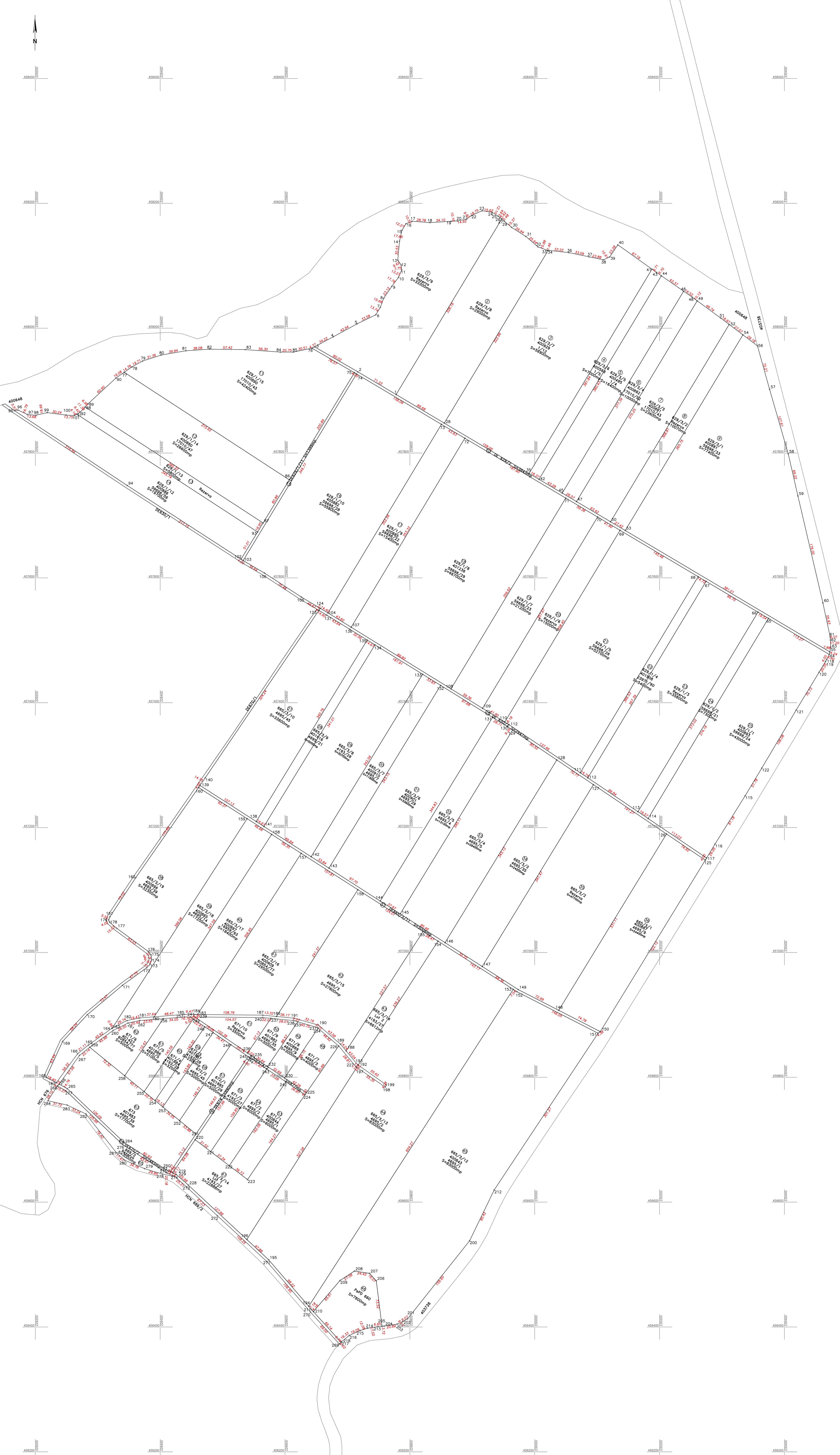


PLAN PARCELAR
 Scara 1:2.000
 Comuna Nitchidorf, Judetul Timis
 Tarla A629/3, DE629/2, A629/1, A665/3,
 DE665/3/11, F669/2, F671, F672, A673,
 PsPd660, DE630, DE 674, DE674/2, DE670/2



Nr. Crt.	Nr. Cad.	Nr. Cad. Atribuit
1	A629/3/9	404947
2	A629/3/8	404946
3	A629/3/7	400929
4	A629/3/6	404568
5	A629/3/5	400495
6	A629/3/4	400892
7	A629/3/3	400891
8	A629/3/2	404945
9	A629/3/1	400881
10	DE629/2	404951
11	A629/1/15	400890
12	A629/1/14	400880
13	A629/1/13	404950
14	A629/1/12	400886
15	DE629/1/11	404950
16	A629/1/10	400882
17	A629/1/9	400885
18	A629/1/8	401236
19	A629/1/7	404950
20	A629/1/6	404950
21	A629/1/5	404950
22	A629/1/4	401908
23	A629/1/3	404946
24	A629/1/2	404947
25	A629/1/1	400893
26	DE630/2	
27	A665/3/10	404959
28	A665/3/9	401616
29	A665/3/8	
30	A665/3/7	400910
31	A665/3/6	400901
32	A665/3/5	
33	A665/3/4	
34	A665/3/3	
35	A665/3/2	
36	A665/3/1	400887
37	DE665/3/11	
38	A665/3/10	400896
39	A665/3/9	400895
40	A665/3/8	400897
41	A665/3/7	400909
42	A665/3/6	
43	A665/3/5-Lot 2	
44	A665/3/4	
45	A665/3/3	400843
46	PsPd 660	
47	A665/3/14-Lot 1	
48	F671/7	
49	F671/8	400889
50	F671/9	401882
51	F671/10	
52	DE674/2	
53	F671/1	400844
54	F671/2	
55	F671/3	
56	DE674	
57	F672/1	401885
58	F672/2	
59	F672/3	401887
60	F671/4	401884
61	F671/5	401886
62	F671/6	401877
63	A673	401883
64	DE670/2	
65	F669/2	

EXECUTANT,
 S.C. TOPO MAS S.R.L., CLASA III,
 Certificat de autorizare Seria RO-B-J,
 nr. 1549/03.06.2019
 GALICIU ADRIAN-ZENON, CATEGORIA D,
 Certificat de autorizare Seria RO-B-F,
 nr. 1501/2012

VIZAT,
 COMISIA LOCALA DE FOND FUNCJAR
 Presedinte Comisie: Primar Danut Ionel DRAGHICI

Data: 2023

Prezentul plan parcelar este valabil insotit de
 TABELUL PARCELAR

21325/2022
 Se confirma suprafata din masuratori si introducerea imobilului in baza de date