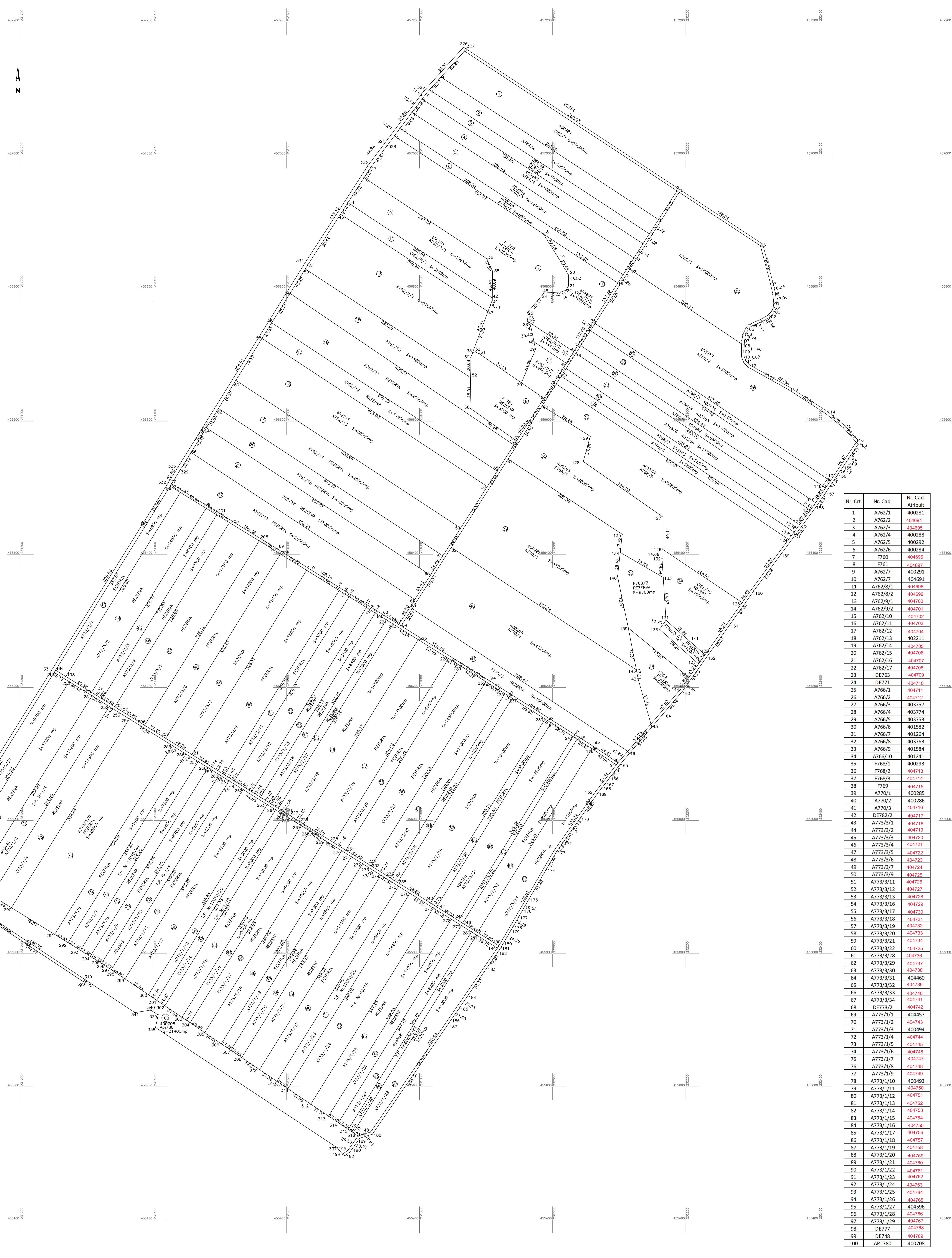


PLAN PARCELAR  
Scara 1:2.000  
Comuna Nitchidorf, Judetul Timis  
Tarla A762 F760 F761 A766 F768 PDT769 A770 DE771,  
A773/3, DE773/2, A773/1 DE 782/2



| Nr. Crt. | Nr. Cad.  | Nr. Cad. Attribut |
|----------|-----------|-------------------|
| 1        | A762/1    | 400281            |
| 2        | A762/2    | 404694            |
| 3        | A762/3    | 404695            |
| 4        | A762/4    | 400288            |
| 5        | A762/5    | 400292            |
| 6        | A762/6    | 400284            |
| 7        | F760      | 404696            |
| 8        | F761      | 404697            |
| 9        | A762/7    | 400291            |
| 10       | A762/8    | 404691            |
| 11       | A762/8/1  | 404698            |
| 12       | A762/8/2  | 404699            |
| 13       | A762/9/1  | 404700            |
| 14       | A762/9/2  | 404701            |
| 15       | A762/10   | 404702            |
| 16       | A762/11   | 404703            |
| 17       | A762/12   | 404704            |
| 18       | A762/13   | 402211            |
| 19       | A762/14   | 404705            |
| 20       | A762/15   | 404706            |
| 21       | A762/16   | 404707            |
| 22       | A762/17   | 404708            |
| 23       | DE763     | 404709            |
| 24       | DE771     | 404710            |
| 25       | A766/1    | 404711            |
| 26       | A766/2    | 404712            |
| 27       | A766/3    | 403757            |
| 28       | A766/4    | 403774            |
| 29       | A766/5    | 403753            |
| 30       | A766/6    | 401582            |
| 31       | A766/7    | 401264            |
| 32       | A766/8    | 403763            |
| 33       | A766/9    | 401584            |
| 34       | A766/10   | 401241            |
| 35       | F768/1    | 400293            |
| 36       | F768/2    | 404713            |
| 37       | F768/3    | 404714            |
| 38       | F769      | 404715            |
| 39       | A770/1    | 400285            |
| 40       | A770/2    | 400286            |
| 41       | A770/3    | 404716            |
| 42       | DE782/2   | 404728            |
| 43       | A773/1/1  | 404718            |
| 44       | A773/1/2  | 404719            |
| 45       | A773/1/3  | 404720            |
| 46       | A773/1/4  | 404721            |
| 47       | A773/1/5  | 404722            |
| 48       | A773/1/6  | 404723            |
| 49       | A773/1/7  | 404724            |
| 50       | A773/1/8  | 404725            |
| 51       | A773/1/9  | 404726            |
| 52       | A773/1/10 | 404727            |
| 53       | A773/1/11 | 404728            |
| 54       | A773/1/12 | 404729            |
| 55       | A773/1/13 | 404730            |
| 56       | A773/1/14 | 404731            |
| 57       | A773/1/15 | 404732            |
| 58       | A773/1/16 | 404733            |
| 59       | A773/1/17 | 404734            |
| 60       | A773/1/18 | 404735            |
| 61       | A773/1/19 | 404736            |
| 62       | A773/1/20 | 404737            |
| 63       | A773/1/21 | 404738            |
| 64       | A773/1/22 | 404460            |
| 65       | A773/1/23 | 404739            |
| 66       | A773/1/24 | 404740            |
| 67       | A773/1/25 | 404741            |
| 68       | DE773/2   | 404742            |
| 69       | A773/1/1  | 404457            |
| 70       | A773/1/2  | 404743            |
| 71       | A773/1/3  | 400494            |
| 72       | A773/1/4  | 404744            |
| 73       | A773/1/5  | 404745            |
| 74       | A773/1/6  | 404746            |
| 75       | A773/1/7  | 404747            |
| 76       | A773/1/8  | 404748            |
| 77       | A773/1/9  | 404749            |
| 78       | A773/1/10 | 400493            |
| 79       | A773/1/11 | 404750            |
| 80       | A773/1/12 | 404751            |
| 81       | A773/1/13 | 404752            |
| 82       | A773/1/14 | 404753            |
| 83       | A773/1/15 | 404754            |
| 84       | A773/1/16 | 404755            |
| 85       | A773/1/17 | 404756            |
| 86       | A773/1/18 | 404757            |
| 87       | A773/1/19 | 404758            |
| 88       | A773/1/20 | 404759            |
| 89       | A773/1/21 | 404760            |
| 90       | A773/1/22 | 404761            |
| 91       | A773/1/23 | 404762            |
| 92       | A773/1/24 | 404763            |
| 93       | A773/1/25 | 404764            |
| 94       | A773/1/26 | 404765            |
| 95       | A773/1/27 | 404596            |
| 96       | A773/1/28 | 404766            |
| 97       | A773/1/29 | 404767            |
| 98       | DE777     | 404768            |
| 99       | DE748     | 404769            |
| 100      | API 780   | 400708            |

EXECUTANT,  
S.C. TOPO MAS S.R.L., CLASA III,  
Certificat de autorizare Seria RO-B-J,  
nr. 1549/03.06.2019  
GALICIU ADRIAN-ZENO, CATEGORIA D,  
Certificat de autorizare Seria RO-B-F,  
nr. 1501/2012

VIZAT,  
COMISIA LOCALA DE FOND FUNCJAR  
Presedinte Comisie: Primar Danut Ionel DRAGHICI

Data: 2023

Prezentul plan parcelar este valabil insovit de  
TABELUL PARCELAR