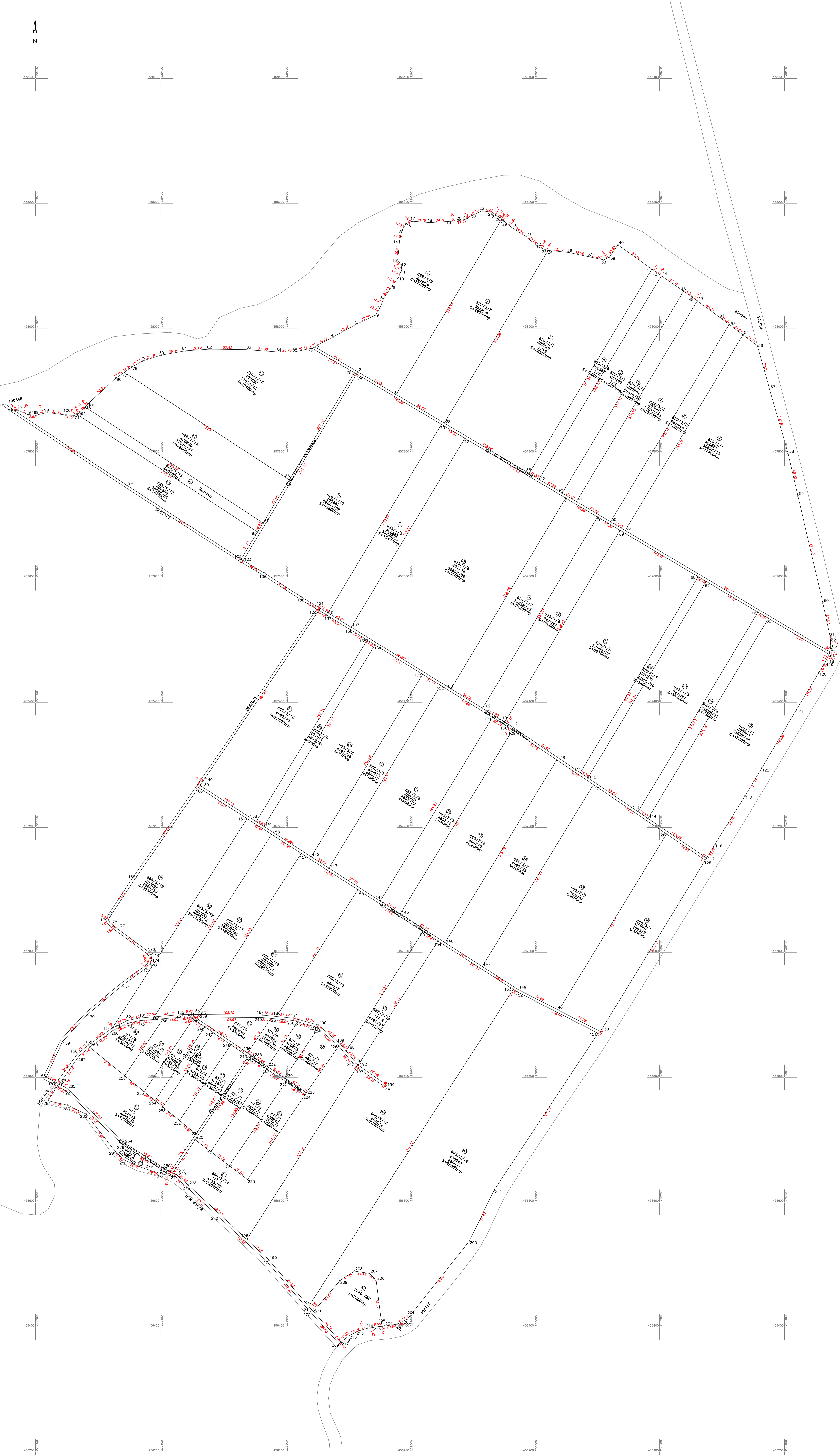


PLAN PARCELAR
Scara 1:2.000
Comuna Nitchidorf, Judetul Timis
Tarla A629/3, DE629/2, A629/1, A665/3,
DE665/3/11, F669/2, F671, F672, A673,
PsPd660, DE630, DE 674, DE674/2, DE670/2



Nr. Crt.	Nr. Cad.	Nr. Cad. Atribuit
1	A629/3/0	404947
2	A629/3/8	404948
3	A629/3/7	400929
4	A629/3/6	404568
5	A629/3/5	400495
6	A629/3/4	400892
7	A629/3/3	400891
8	A629/3/2	404949
9	A629/3/1	400881
10	DE629/2	404951
11	A629/1/15	400890
12	A629/1/14	400880
13	A629/1/13	404950
14	A629/1/12	400886
15	DE629/1/11	404952
16	A629/1/10	400882
17	A629/1/9	400885
18	A629/1/8	401236
19	A629/1/7	404953
20	A629/1/6	404954
21	A629/1/5	404955
22	A629/1/4	401908
23	A629/1/3	404956
24	A629/1/2	404957
25	A629/1/1	400893
26	DE630/2	404958
27	A665/3/9	404959
28	A665/3/8	401616
29	A665/3/7	404960
30	A665/3/6	400910
31	A665/3/5	400901
32	A665/3/4	404961
33	A665/3/3	404962
34	A665/3/2	404963
35	A665/3/1	404964
36	A665/3/0	400887
37	DE665/3/11	404965
38	A665/3/10	400896
39	A665/3/9	400885
40	A665/3/8	400897
41	A665/3/7	400909
42	A665/3/6	404966
43	A665/3/5-Lot 2	404967
44	A665/3/4	404968
45	A665/3/3	400843
46	PsPd 660	404974
47	A665/3/14-Lot 1	404975
48	F671/7	404976
49	F671/8	400889
50	F671/9	401882
51	F671/10	404977
52	DE674/2	404978
53	F671/1	400844
54	F671/2	404979
55	F671/3	404980
56	DE674	404970
57	F672/1	401885
58	F672/2	404971
59	F672/3	401887
60	F671/4	401884
61	F671/5	401886
62	F671/6	401227
63	A673	401883
64	DE670/2	404972
65	F669/2	404973

EXECUTANT,
S.C. TOPO MAS S.R.L., CLASA III,
Certificat de autorizare Seria RO-B-J,
nr. 1549/03.06.2019
GALICIU ADRIAN-ZENON, CATEGORIA D,
Certificat de autorizare Seria RO-B-F,
nr. 1501/2012

VIZAT,
COMISIA LOCALA DE FOND FUNKIAR
Prezinta Comisie: Primar Danut Ionel DRAGHICI

Data: 2023
Prezentul plan parcelar este valabil insotit de
TABELUL PARCELAR

21325/2023
Se confirma suprafata din masuratori si introducerea imobilului in baza de date